

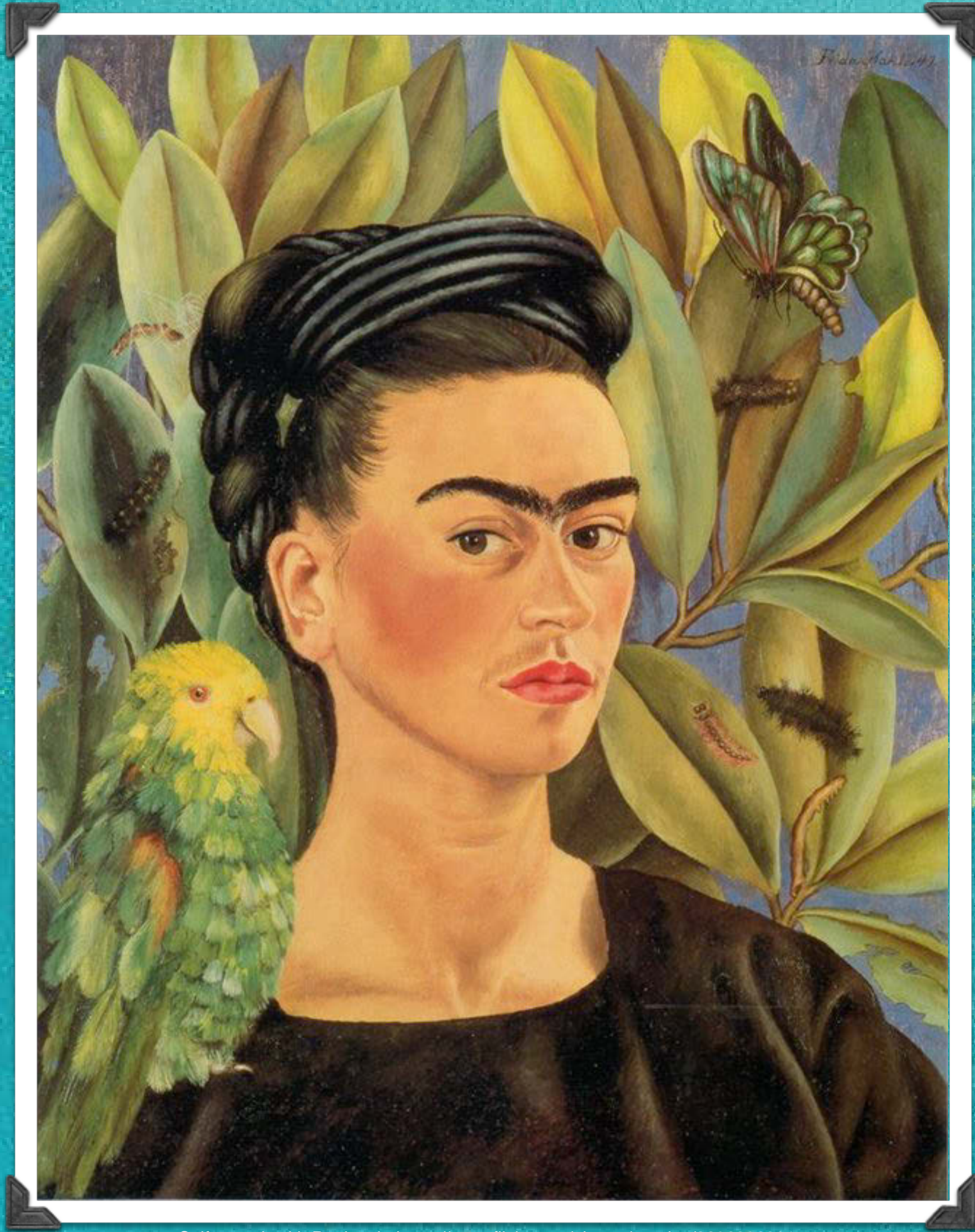


Learning Objective:

To explore how Kahlo painted moments in her life
and expressed emotion through her work.

A lot of Frida Kahlo's paintings were autobiographical, especially her self portraits.

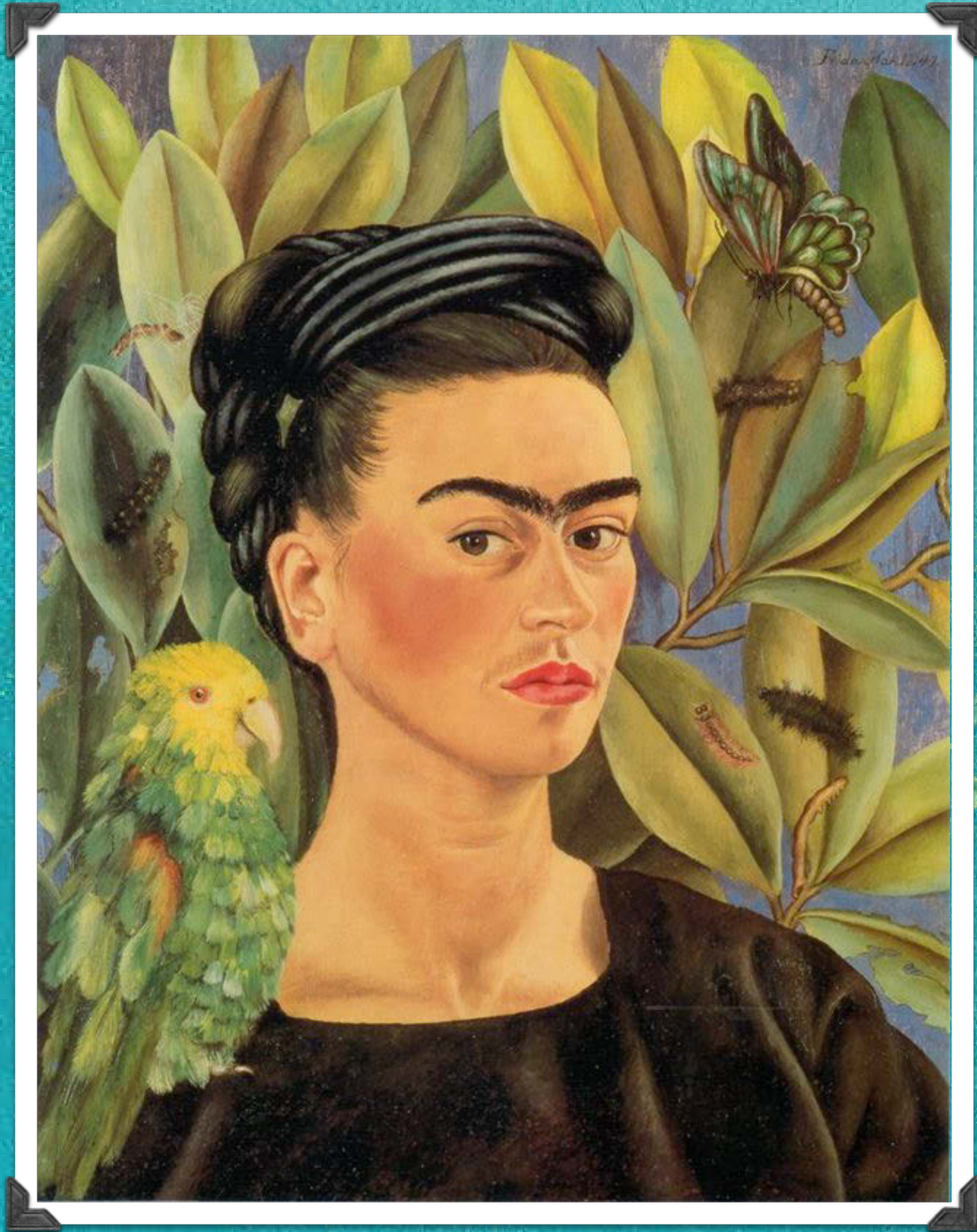
What does autobiographical mean?



Self portrait with Bonito via <https://www.flickr.com/photos/repolco/26063063015>

Back

Next



Self portrait with Bonito via <https://www.flickr.com/photos/repolco/26063063015>

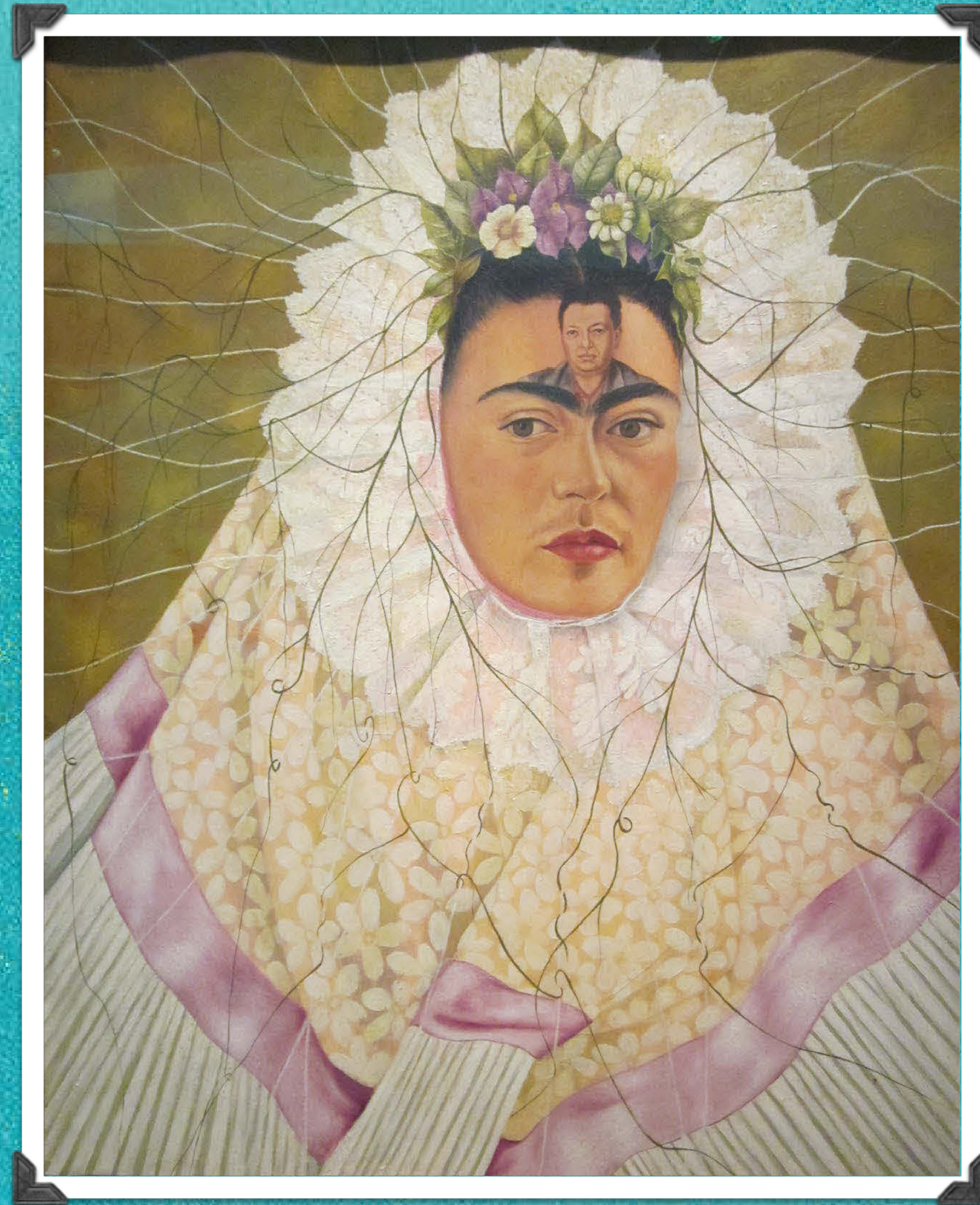
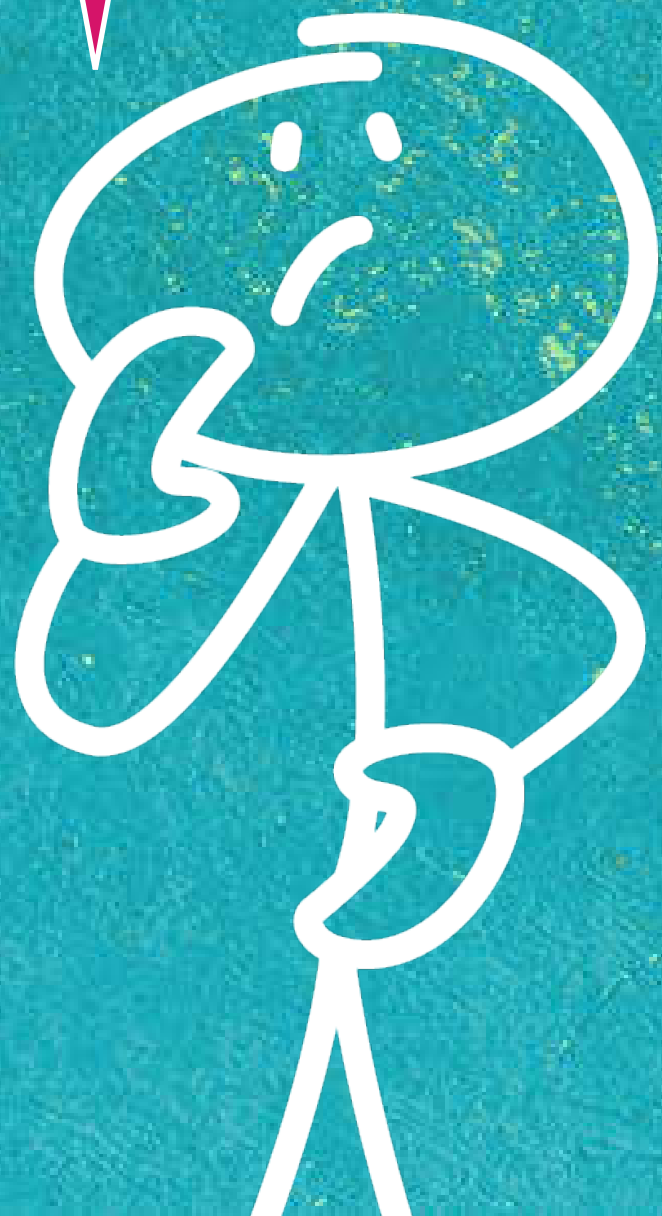
Her paintings told stories about important moments in her life. She was encouraged to paint these pieces by her father and her husband, often when she was feeling strong emotions such as happiness, sadness and loneliness.

Back

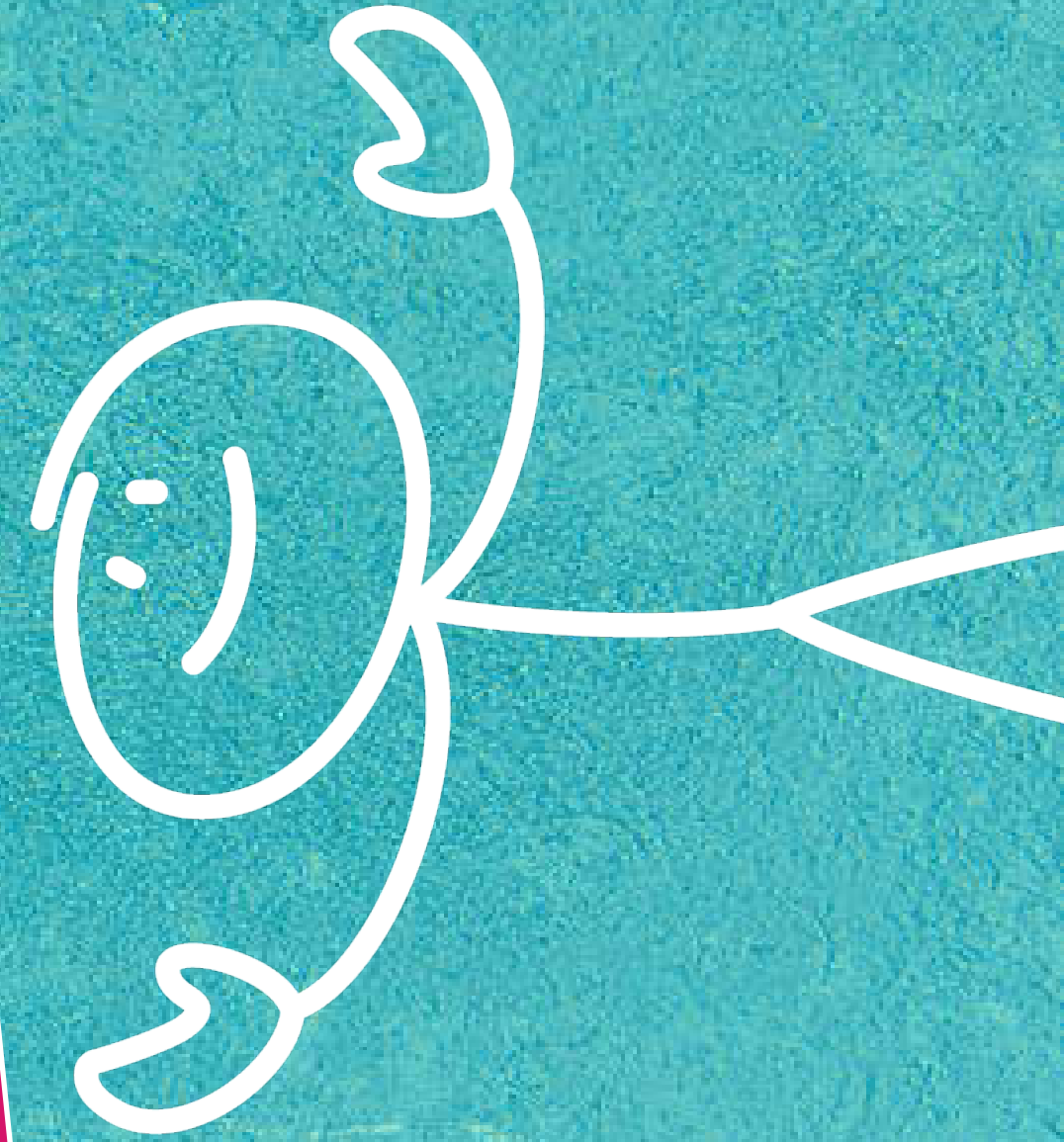
Next

This painting is called 'Thinking of Diego' or sometimes 'Self Portrait as a Teuhana'.

Do you remember anything about this painting?

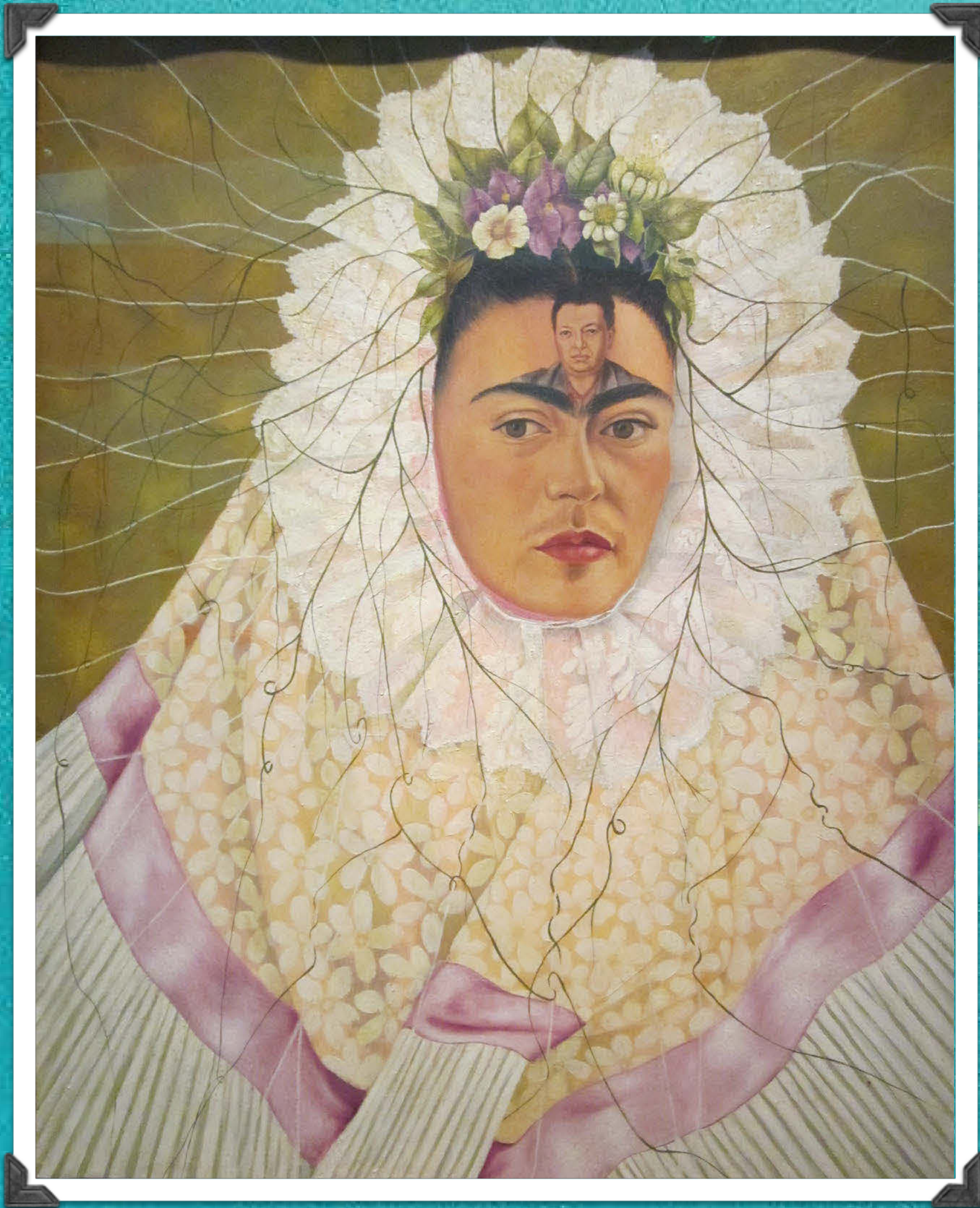


What moment of Kahlo's life do you think she was painting here?



Back

Next



Martha Rivero - IMG_0065 via https://www.flickr.com/photos/soy_de_cali_ve/9519321086/

It does look like Kahlo is wearing a wedding dress but it is actually a traditional Tehuana costume from Mexico. Her husband Diego was particularly fond of this kind of clothing. This painting was actually done after Kahlo and her husband divorced. It shows how she still thinks about him and wanted to please him by wearing the clothes he liked.

Back

Next

'Self Portrait on the Border Line Between Mexico and the United States'

What do you remember about this painting?

Why do you think Kahlo painted this picture?

What emotions do you think she was feeling when she painted it?



Back

Next

'Self Portrait on the Border Line Between Mexico and the United States'

This was painted when Kahlo and her husband were living in America because of Diego's work.

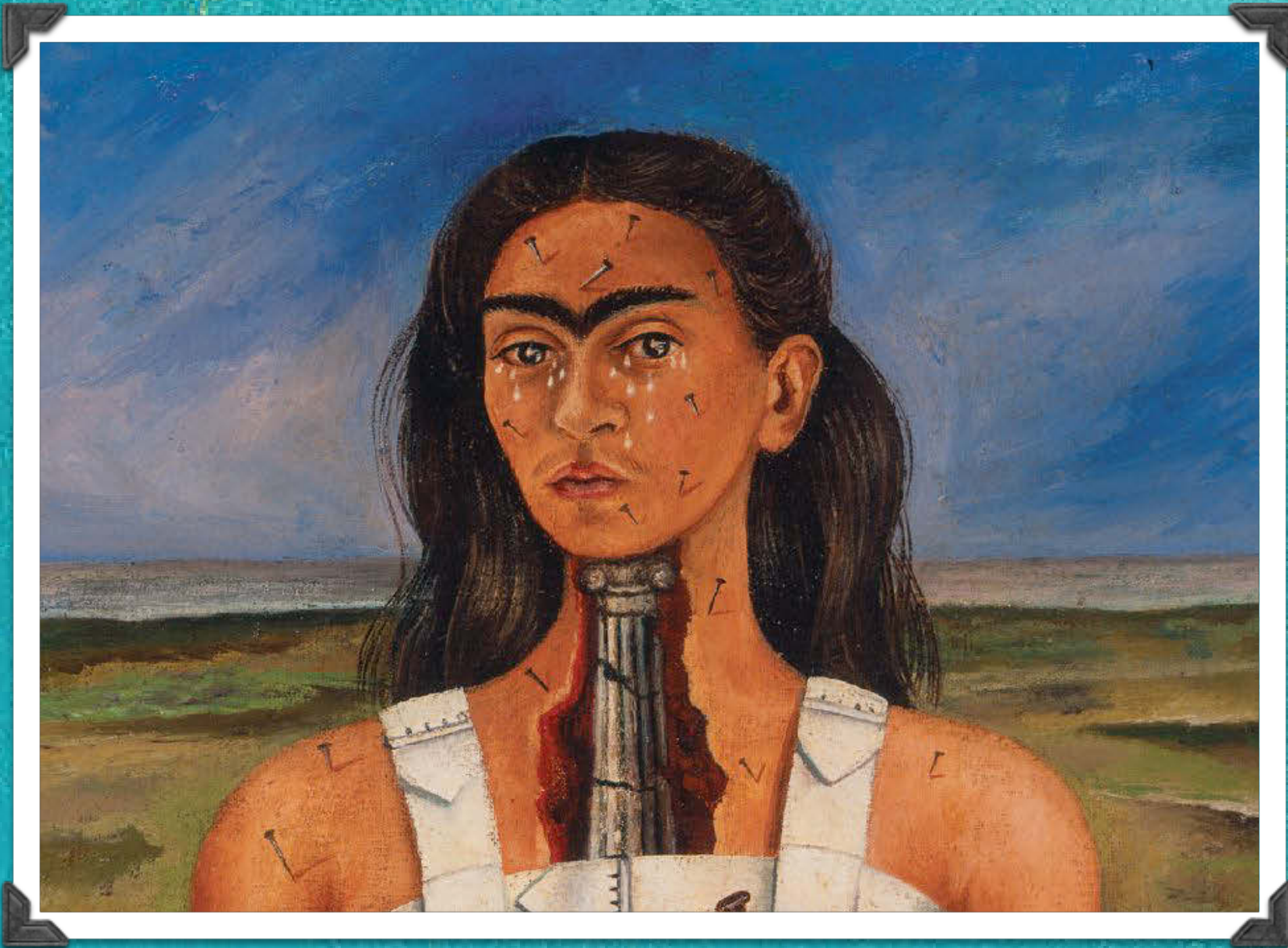
Kahlo missed Mexico terribly and began to dislike America. This painting shows her loyalty to Mexico and her wish to return there.



Back

Next

This is from one of Kahlo's intense pieces of art 'The Broken Column'. This painting was done after she had an operation to help treat her back pain after her accident. The operation was unsuccessful.



She used the painting to express the pain and frustration she felt at this point in her life.

Can you spot the ways Kahlo is expressing her feelings and her pain?

Back

Next

Frida and Diego Rivera

What part of her life has Kahlo chosen to paint here?

Why do you think she's painting him holding a paint brush and pallet?

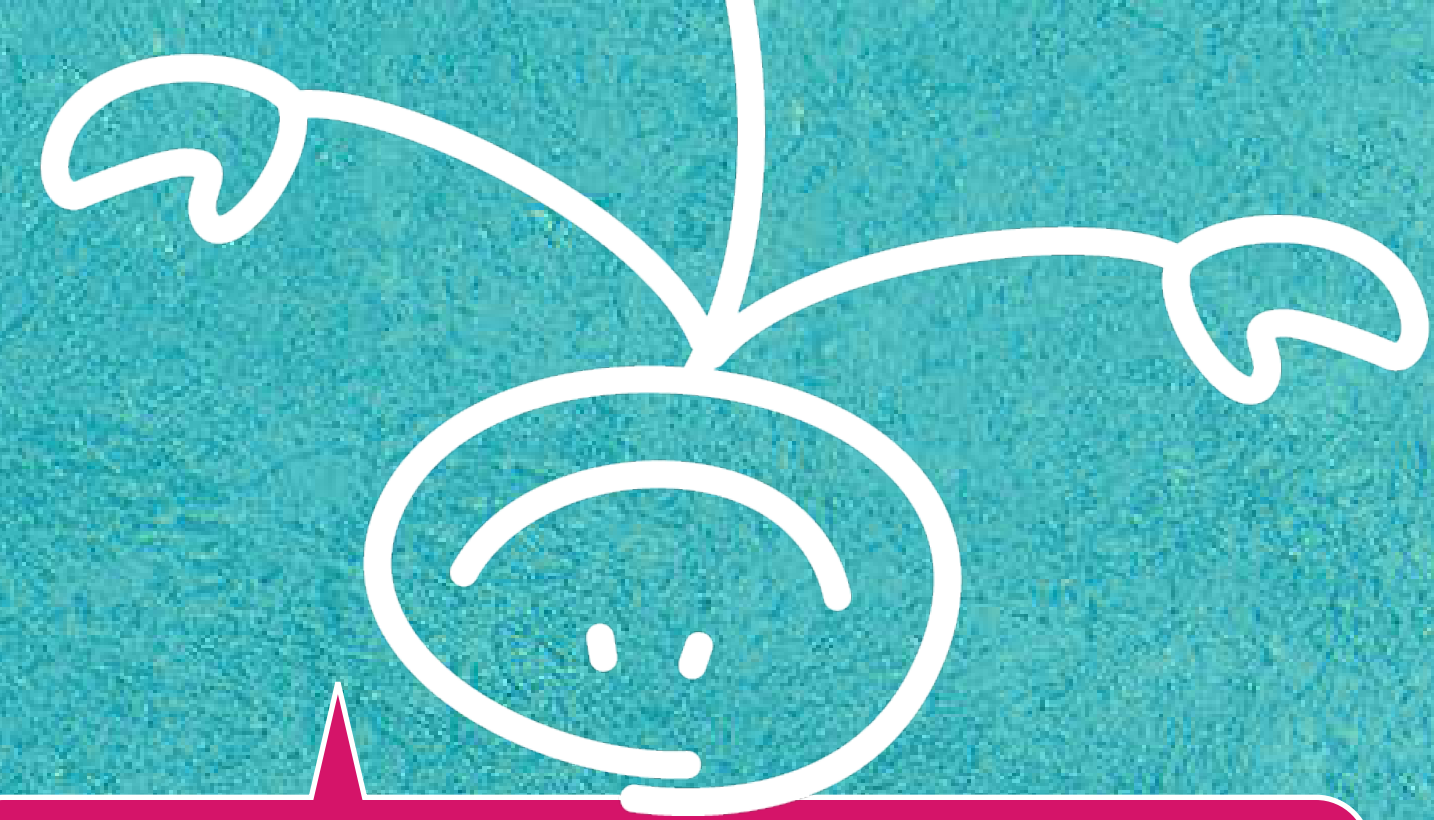
What emotions could they be feeling?

What might be written on the ribbon the bird is carrying?



Libby Rosof- Image 2 via <https://www.flickr.com/photos/libbyrosol/2267816636/in/photostream/>

Frida and Diego Rivera



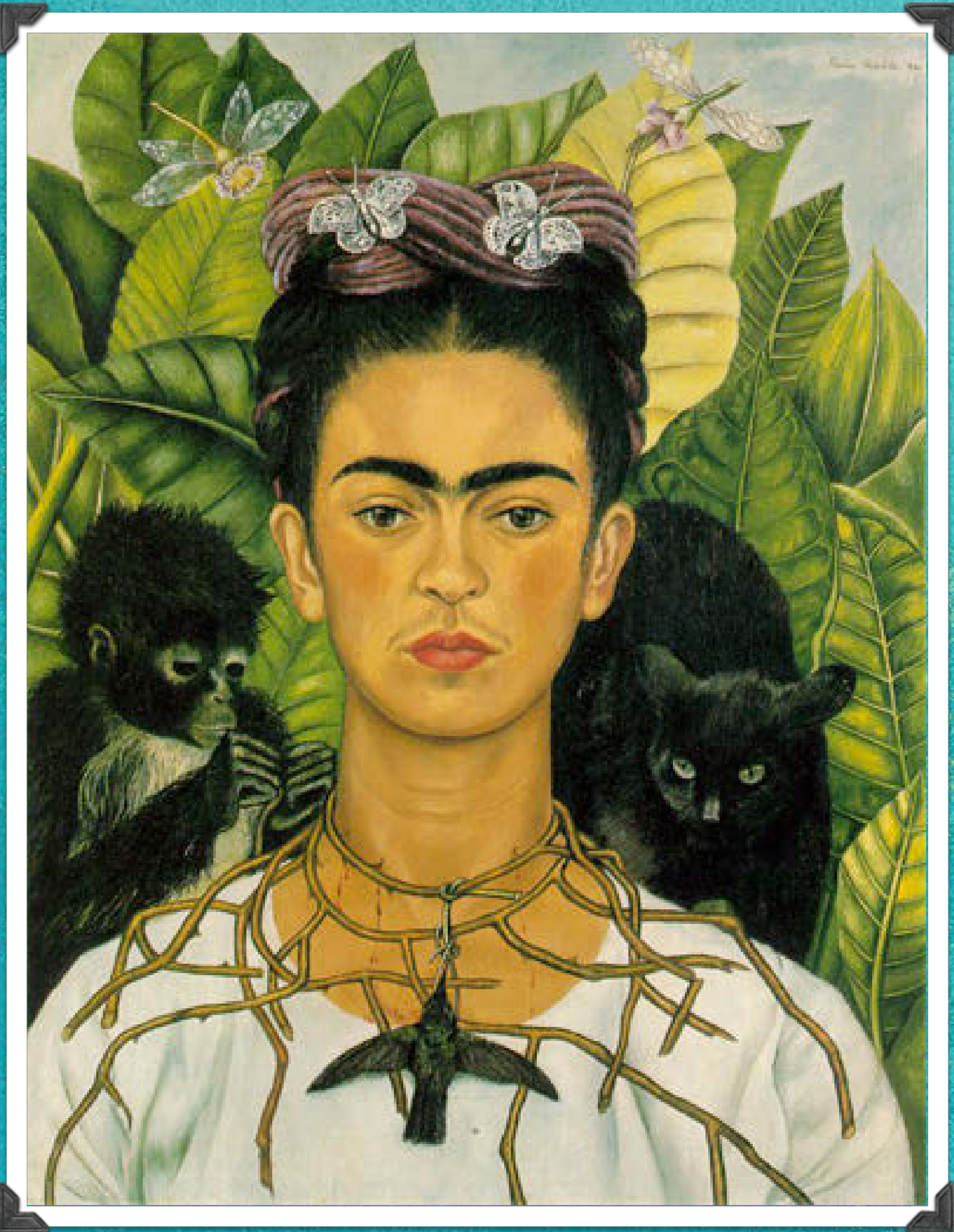
The ribbon reads: 'Here you see us, me Frida Kahlo, with my dearest husband Diego Rivera'



Libby Rosof- Image 2 via <https://www.flickr.com/photos/libbyrosf/2267816636/in/photostream/>

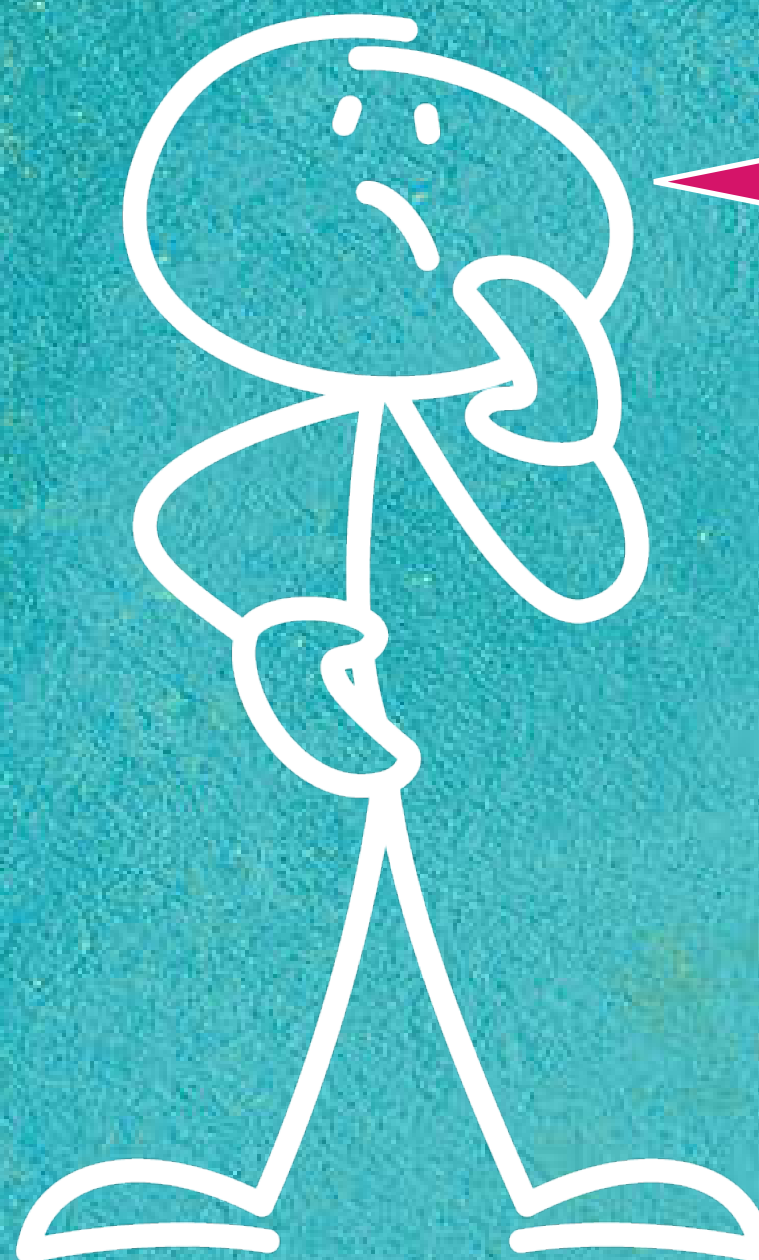
Back

Next



Cea+ - Frida Kahlo - Self-portrait with Thorn Necklace and Hummingbird (1940) via <https://www.flickr.com/photos/centralasian/5493700957>

Frida would use her backgrounds and other objects in her paintings to show the emotions she was trying to portray. She rarely showed these emotions in the faces of her self portraits.

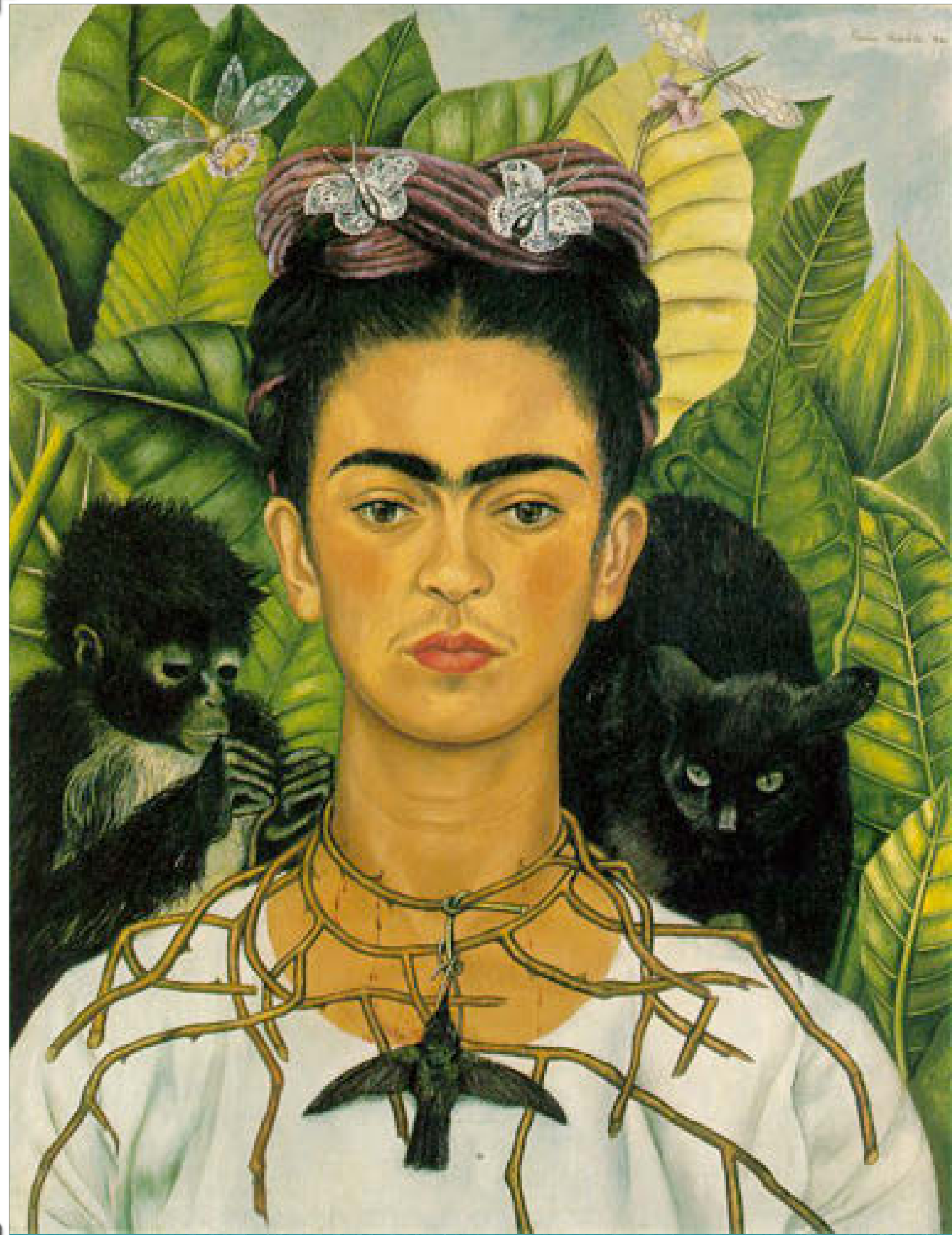


www.planbee.com

What emotions do you think she is showing with the background and objects in this painting?

Back

Next

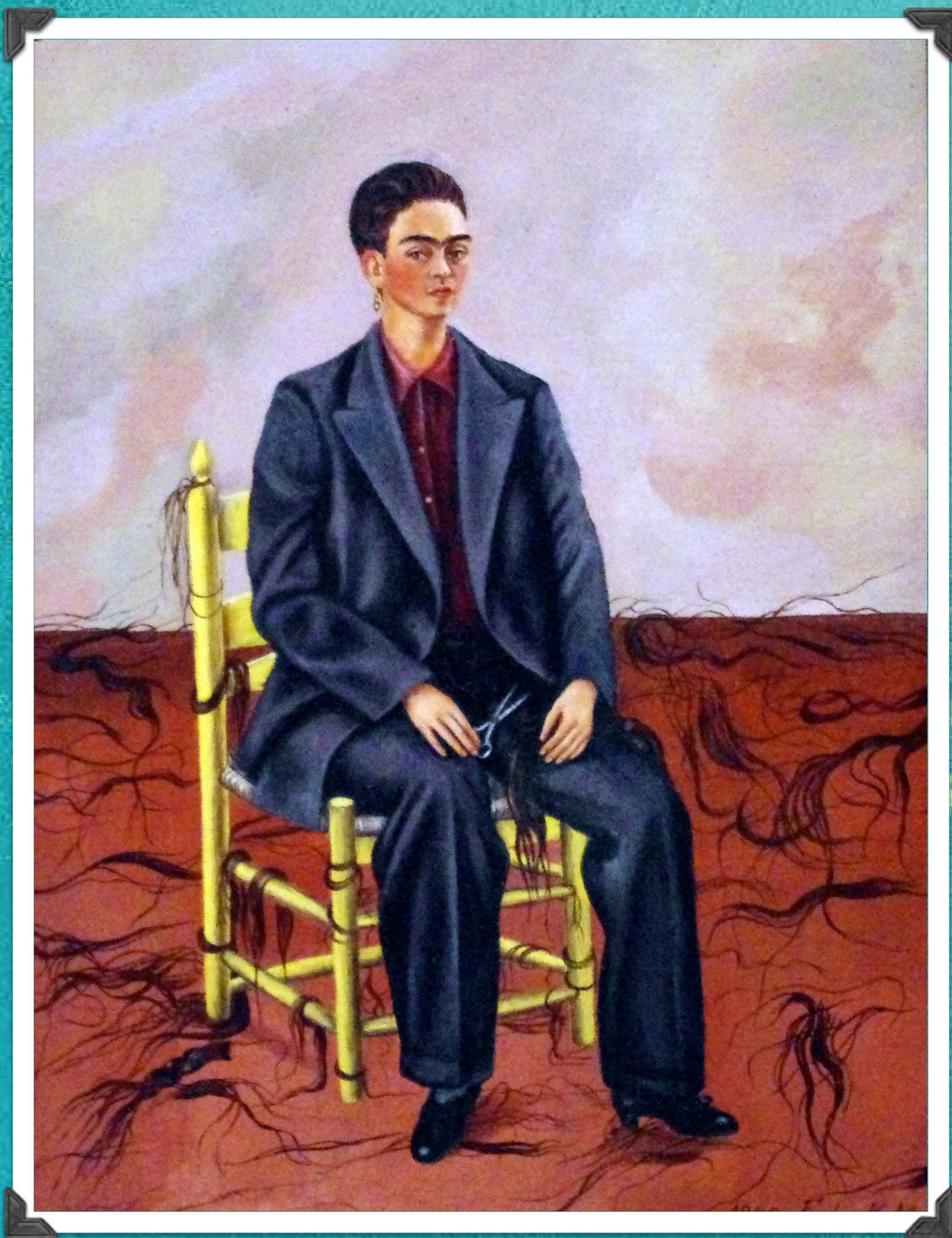


The dark colours and flat ears of the animals in the portrait suggest fear in this painting. The thorns around her neck might show that she was in pain. Maybe this was the pain she suffered from the accident she was in when she was 18.

Cea+ - Frida Kahlo - Self-portrait with Thorn Necklace and Hummingbird (1940) via <https://www.flickr.com/photos/centralasian/5493700957>

Back

Next



Plenary

Self Portrait with Cropped Hair

When do you think
this was painted?

Is Kahlo happy or
sad in this painting?

What do you think is
on the floor?

What do you think
about her clothes?

Back

Next



Plenary

‘Self Portrait with Cropped Hair’ was another painting she made after divorcing her husband. One of the things he loved about her was her long hair. This act of cutting off her hair while wearing what looks to be one of his suits, was Kahlo expressing her strong feelings towards him at this point in her life.